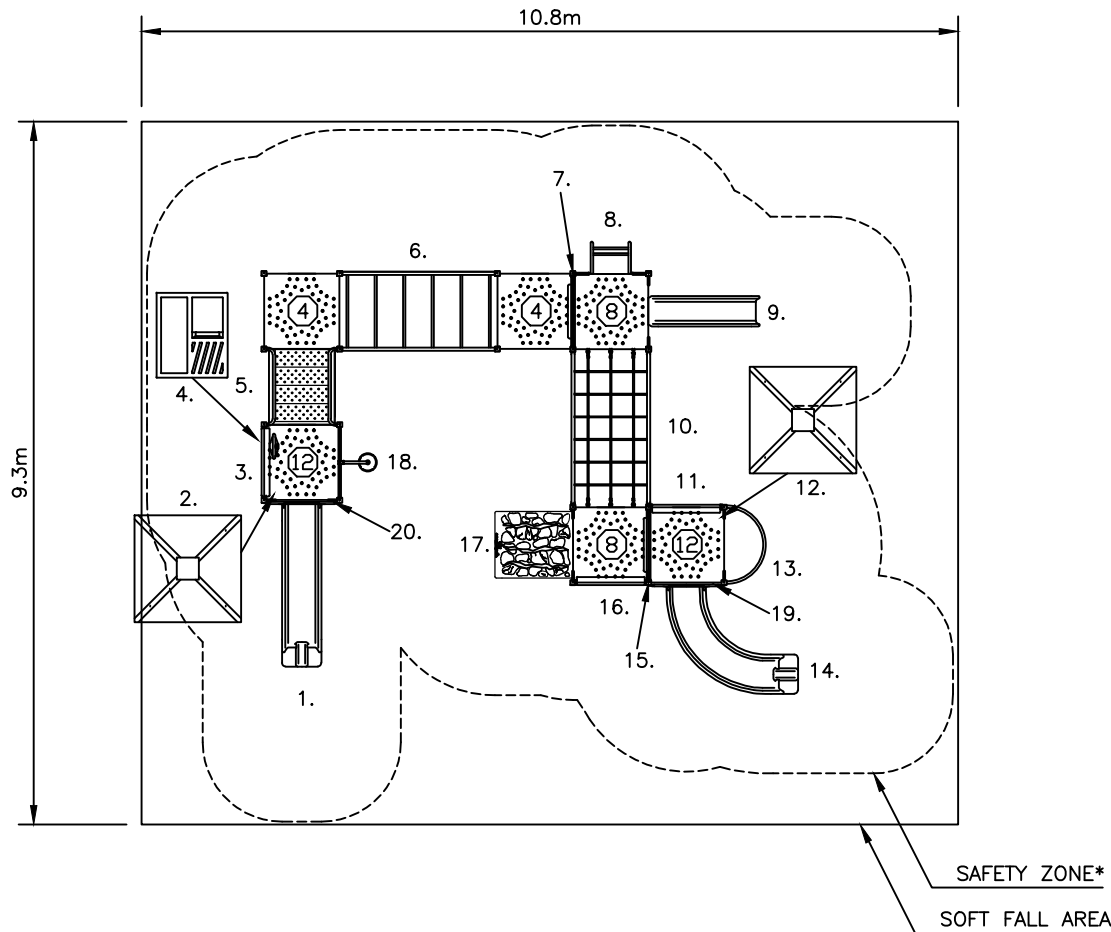


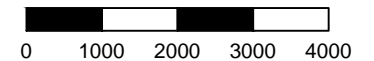
DO NOT SCALE



1. CATERPILLAR SLIDE 1200 (CASEY SPEC)
2. DOME ROOF
3. PLASTIC OBLIQUE PANEL & WHEEL
4. SHOP FRONT (UNDER)
5. SAFETY STAIRS DK-DK 800
6. CHALLENGE LADDER
7. STEP PANEL & LOOPS
8. VERTICAL LADDER 800
9. CATERPILLAR SLIDE 800
10. ROPE BRIDGE DK-DK 800
11. PLASTIC OBLIQUE PANEL
12. DOME ROOF
13. FIREPOLE 1200
14. CURVED CATERPILLAR SLIDE (CASEY SPEC)
15. STEP PANEL & LOOPS
16. PLASTIC OBLIQUE PANEL
17. ROCKY RAMBLE DK-GRND 800
18. SINGLE POMMEL CLIMBER 1200
19. SLIDE ENTRY PANEL
20. SLIDE ENTRY PANEL

511-ALEGRA
MAX FHF: 2.2M

SCALE = mm



*AS 4685:2014

APPROX AREA (sq.m.): 100.4 APPROX PERIMETER (lin.m.): 40.2

DISTRIBUTED BY



AUSTEK PLAY
1300 433 364
WWW.AUSTEKPLAY.COM.AU
INFO@AUSTEKPLAY.COM.AU

511 - ALEGRA
EXTREME UNIT
STANDARD DRAWING

DRAWING No.: 511

REV: A

DRN: Y.Gunawan
DATE: 30/07/14

SCALE 1:100
SHEET 1 OF 1

SIZE
A4

- Heights above Playground surface are shown on decks and all play equipment, is. (3) = 40mm
- Impact absorbing ground cover is required under and around all play equipment.
- The min. recommended fall zone around the entire play structure is shown. This zone is to be free of all tripping or collision hazards (i.e. roots, rocks, border material, etc).
- Site layout and dimensions are subject to verification prior to installation.
- Dimensions in millimetres unless stated otherwise.

OMNITECH PLAYGROUNDS - ABN 88 004 660 495 - PH 1800 812 027 - WEB WWW.OMNITECH.COM.AU - EMAIL INFO@OMNITECH.COM.AU - THIS DRAWING IS THE PROPERTY OF OMNITECH PLAYGROUNDS. REPRODUCTION IS PROHIBITED WITHOUT WRITTEN CONSENT.

