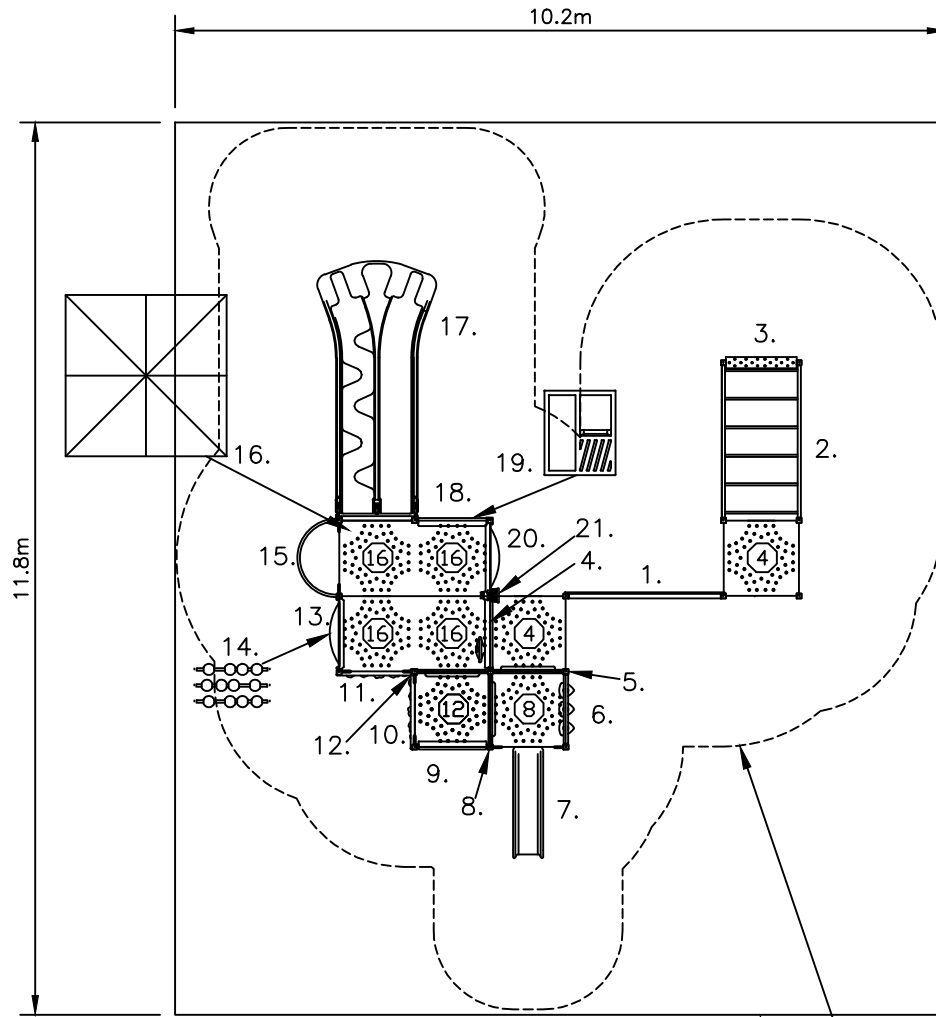


DO NOT SCALE



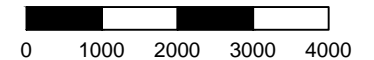
1. SPIDER CLIMBER
2. CHALLENGE LADDER
3. STEP END DECK
4. PLASTIC OBLIQUE PANEL W/ STEERING WHEEL
5. STEP PANEL & LOOPS
6. NAUGHTS AND CROSSES PANEL
7. CATERPILLAR SLIDE (800)
8. STEP PANEL & LOOPS
9. PLASTIC OBLIQUE PANEL
10. ROCKWALL CHALLENGE (1200)
11. ROCKWALL CHALLENGE (1600)
12. STEP PANEL & LOOPS
13. BUBBLE PANEL
14. ABACUS PANEL (UNDER)
15. FIREPOLE (1600)
16. LARGE CASTLE ROOF
17. RACERBACK DOUBLE WIDE SLIDE
18. PLASTIC OBLIQUE PANEL
19. SHOP FRONT PANEL (UNDER)
20. BUBBLE PANEL
21. KALEIDOSCOPE

556-Louis
MAX FHF: 2.2m

SAFETY ZONE*

SOFT FALL AREA

SCALE = mm



*AS 4685:2014

APPROX AREA (sq.m.): 120.4 APPROX PERIMETER (lin.m.): 44.0

DISTRIBUTED BY



AUSTEK PLAY
1300 433 364
WWW.AUSTEKPLAY.COM.AU
INFO@AUSTEKPLAY.COM.AU

556 - LOUIS
EXTREME UNIT
STANDARD DRAWING

DRAWING No.: 556

REV: A

DRN: L. Blue

SCALE 1:100

SIZE

DATE: 12/12/13

SHEET 1 OF 1

A4

- Heights above Playground surface are shown on decks and all play equipment, is. Ⓢ = 400mm
- Impact absorbing ground cover is required under and around all play equipment.
- The min. recommended fall zone around the entire play structure is shown. This zone is to be free of all tripping or collision hazards (i.e. roots, rocks, border material, etc).
- Site layout and dimensions are subject to verification prior to installation.
- Dimensions in millimetres unless stated otherwise.

OMNITECH PLAYGROUNDS - ABN 88 004 660 495 - PH 1800 812 027 - WEB WWW.OMNITECH.COM.AU - EMAIL INFO@OMNITECH.COM.AU - THIS DRAWING IS THE PROPERTY OF OMNITECH PLAYGROUNDS. REPRODUCTION IS PROHIBITED WITHOUT WRITTEN CONSENT.

