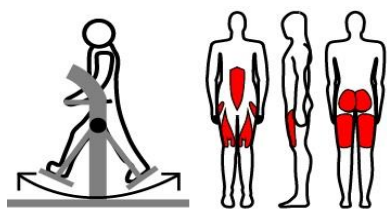
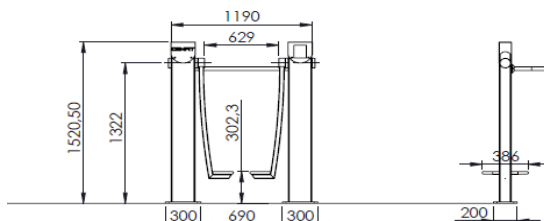
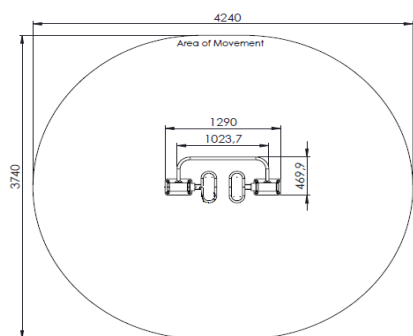


Technical information Denfit UrbanGym - WaveWalk



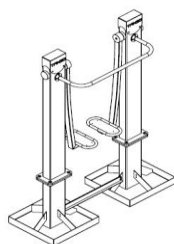
Air walking



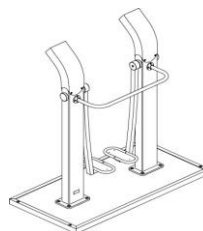
With low top

WaveWalk	The basic exercise is Air walking, follow the instruction pictogram. Many alternative exercises are possible on the WaveWalk. Check out the QR code that leads to all training possibilities.
Accessories	Instruction pictogram and QR code
Material	All main posts hot dipped galvanized and powder coated (in many different RAL colours) steel. The bent top is of stainless steel 304 and can be coated in the same color as the post. The straight top is of stainless steel 304, ceramic pearled. Other steel parts (seat, handles, frames) hot zinc flame sprayed and textured powder coated in Noir Sablé. Tubes stainless steel 304 ceramic pearled. Optional floor is hot dipped galvanized and covered with wet pour in black. The installation frame is of hot dipped galvanized steel.
Dimensions material:	Main post: 200 x 100 x 4 mm Square tubes: 60 x 40 x 3 mm Round tubes/handles: Ø 33,7 x 3 mm Floor frame: 60 x 40 x 3 mm covered with 10-15 mm wet pour Floor: 1800 x 900 x 60 mm
area of movement	15,9 m ²
fall protection	not needed
Assembly	Preassembled sections - Optional: mounted on own floor
free height of fall	300 mm
intended for	adults and youth > 1400 mm
max. user weight	120 kg

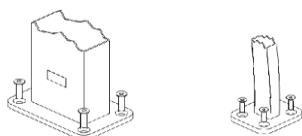
Anchoring **On installation frame in the ground**
no fluid concrete needed
follow the instructions in the service manual



Installation on own floor frame
on soft surface - on concrete - on tarmac
follow the instructions in the service manual



Installation directly on concrete (not tarmac)
installation without own floor directly on tarmac is not possible
follow the instructions in the service manual



Certification: EN16630:2015 for permanently installed outdoor fitness equipment

Notice: *Not intended for children < 1400 mm*
The Denfit Gym equipment should not be used if you are suffering from physiological problems.
Avoid exaggerated physical exhaustion. In case of doubt please contact your doctor before use.
Inspect the equipment before use. Don't use it if it appears damaged or inoperable.