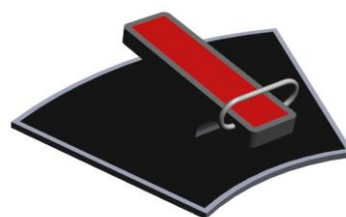
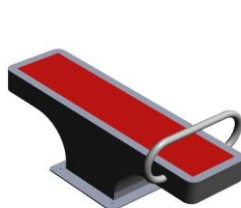
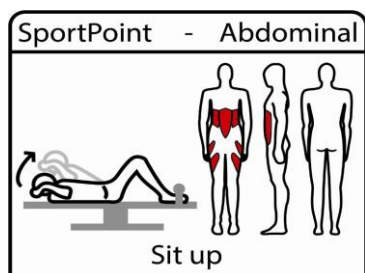
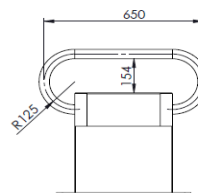
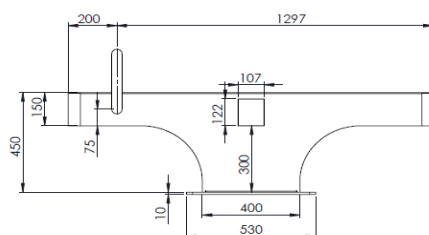
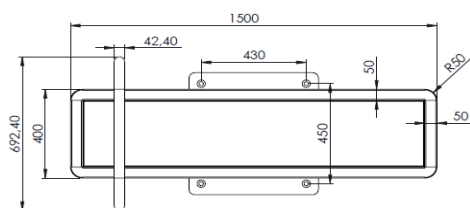
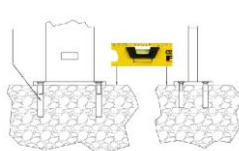
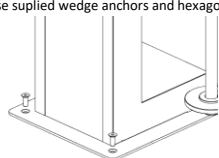


Technical information Professional SportPoint - Abdominal

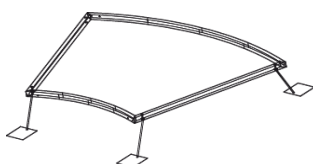


Abdominal	The basic exercise is Sit up, follow the instruction pictogram. Many alternative exercises are possible on the Abdominal. Check out the QR code that leads to all training possibilities.
Accessories	Sticker with instruction pictogram and QR code
Material	Bench and posts hot zinc flame sprayed protected and Gris Sable 2400 textured powder coated steel. The beams are stainless steel 304, ceramic pearled. Inlay part and tops textured powder coated steel plate in many different colours. Floor parts are hot dipped galvanized and coated with 10-15 mm black wet pour.
Dimensions	Round tubes/handles: Ø 42,4 x 3 mm / Ø33,7 x 3 mm
material	Floor: 2400 x 1720 x 60 mm
Area of movement	15,98 m ² . This does not apply when Sportpoint floors are connected.
Weight:	Product: 35 kg Floor = 155 kg
Assembly	Preassembled sections - Optional: mounted on own floor
Free height of fall	500 mm
Fall protection	no
intended for	adults and youth > 1400 mm
adjustable weights	n.a.
max. user weight	120 kg

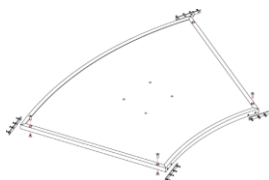
Anchoring **Installation directly on concrete (not tarmac)**
 Use supplied wedge anchors and hexagon socket screws



Installation with own floor part
 in soft surface



on concrete: with supplied wedge anchors and screws
 on tarmac: with chemical anchoring (not supplied)



When 3 or more floors are connected no anchoring into the ground is needed

Certification: EN16630:2015 - for permanently installed outdoor fitness equipment
Notice: Not intended for children >1400 mm
 The Denfit Professional SportPoint equipment should not be used if you are suffering from physiological problems.
 Avoid exaggerated physical exhaustion. In case of doubt please contact your doctor before use.
 Inspect the equipment before use. Don't use it if it appears damaged or inoperable.