



Creating a Space for  
Everyone to Enjoy.



EVERYONE  
CAN PLAY







## Inclusive play for **all**.

Inclusivity means giving everyone the chance to play, whether there are learning disabilities, visual or physical impairments. Moreover, it's a design philosophy for a space which keeps everyone in mind – a space for all ages, physical and mental abilities, and also a space that is sympathetic to any cultural significance of the project's location.

This could mean designing for step-free access, providing areas of shelter and shade, or even providing spaces for service animals. Whatever your needs or constraints, Austek Play can work with you to maximise the inclusive value of your play space.



# Everyone Can Play NSW

**New South Wales is making play spaces statewide more inclusive!**

Through the NSW State Government's Everyone Can Play (ECP) Guideline and Grant Program, they are helping Designers and Councils deliver play spaces that are designed to be more inclusive of everyone in the community.

Austek Play are a commercial playground company, and have a wide range of inclusive play equipment which can be mixed and-matched together to create the perfect playground for your space and budget!

Austek Play is proud to be fully committed to providing play areas which can be enjoyed by all. Our most popular products for inclusive schemes provide a rich range of physical, sensory and social play values.

# EVERYONE CAN PLAY

Inclusion is more than just accessibility, it's about being part of something, together.



See what we've been up to!





# The design principles

These six guiding design principles address the intent of inclusive playspace design in greater detail. Established through a review of current theory and research into playspace design, accessibility standards and universal design, the principles are an important reference for inclusive playspace design.

The design principles extend the focus beyond accessibility to include opportunities for play and social interaction for people of all ages, abilities and cultures. The Everyone Can Play 2021-22 grant round will ask applicants to demonstrate the six design principles in their applications.



## Find

Communicate the purpose and location of play elements and facilities.



## Fit

Provide a range of play opportunities for people of all abilities and sizes.



## Choose

Enable exciting individual experiences and social interaction.



## Join In

Create opportunities for everyone to connect.



## Thrive

Challenge and involve people of all capabilities.



## Belong

Create a place that's welcoming and comfortable.

Refer to the Design Principles Checklist in the Everyone Can Play Guideline to help you design your next playspace project.



# QUIET GROVE

little tikes. COMMERCIAL

Unlimited Play



Light Switch

## Light Switch

Hit the switch up, hit the switch down. A small sound reinforces the activity.



Straight Path

## Straight Path

Simply move the slider up and down the path.



Fidget Spinner

## Fidget Spinner

Make it spin and watch the movement as it goes around and around.



Push the Wall

## Push the Wall

It is "heavy work" to try and push a wall. "Heavy work" is any type of activity that pushes or pulls against the body and helps center a child.



Wavy Path

## Wavy Path

Move the slider up and down through a wavy path.

## A Cozy Retreat to Escape the Hustle.

Quiet Groves offers a peaceful space for children who can become overstimulated on the playground to find a place to refocus and relax. Quiet Grove was designed to reduce the sights, sounds, and even smells that can become overwhelming.

Soothing colours and natural elements add to the peaceful aesthetic of Quiet Grove. Children can also engage in the five calming sensory activities included to reduce stress and anxiety. These activities include a light switch, straight path, push wall, wavy path and fidget spinner that allow children to click, push, spin and move objects.



Belong



Join In



Thrive



Fit

# Inclusive Mirage Swing Seat

**HAGS®**

Inspiring all generations



Designed for children aged 3-14, the Mirage seat offers full body support and ensures that users are in a stable position.

An optional harness can be ordered to provide extra security.

- Provides full body support
- Reclined body position and contoured design offers maximum comfort and support to all users
- Design and accessories are the result of 2 years of consultation with users, carers and professionals
- As a separate component the Mirage "take-away" harness can be easily and securely attached and removed from the seat by carers.



Choose



Belong



Join In



Thrive



Fit



# Dragonfly See-Saw

**HAGS®**

Inspiring all generations



**Choose**



**Belong**



**Join In**



**Thrive**



**Fit**

The Dragonfly See Saw provides back and foot support for users with a lower gross motor strength.

The riders recline and use their leg-power to rise and fall by pushing against a central bar.

It's also a great interactive exercise for abdominal and leg development.





# Inclusive TITAN Carousel

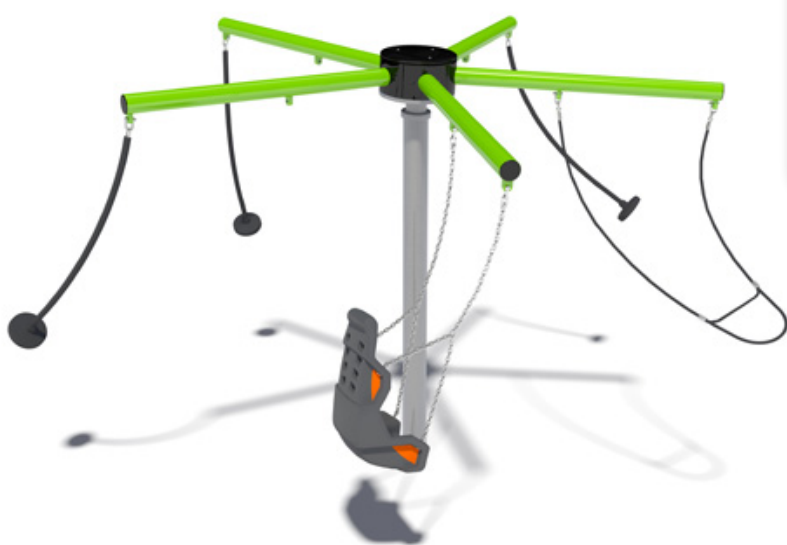
**HAGS®**

Inspiring all generations



The Titan provides an inclusive play experience, enabling children of differing abilities to join the fun and play together.

You can choose any combination of seats (Mirage Seat, Pendulum Button, T-Bar or the Rope Ladder) and create a bespoke play experience tailored to your requirements.



**Join In**



**Thrive**



**Fit**



# Tango Intergenerational Seat

**HAGS®**

Inspiring all generations



The Tango Swing Seat has a unique design that promotes interaction and communication between generations during play.



**Choose**



**Belong**



**Join In**



**Fit**



# Spinmee Roundabout

**HAGS®**  
Inspiring all generations



The Spinmee is perhaps the best of its kind. It's design encourages all children to join in and play at the same time, regardless of their abilities.

The Spinmee is accessible to those with mobility impairments as well as wheelchair users - with space left for friends!

- Allows for both seated and standing users.
- 2 locations that can securely accommodate wheelchairs.
- The Spinmees's rotating base is flush with the surrounding safety surface, allowing for easy transition between the two surfaces.



Choose



Belong



Join In



Thrive



Fit



# Hags ORBIT



reddot design award  
winner 2012

**HAGS®**

Inspiring all generations



The Orbit won a Red Dot Design Award – an internationally recognised quality label that recognises outstanding design achievements.

The Orbit provides collaborative excitement and fun for kids of all ages. With a smooth trajectory, the Orbit rotates at an angle and has a fixed centre – which increases the speed.

The Orbit rotates on a slight angle, encouraging users to lean back – increasing the thrill. The design invites users to sit or even stand in different ways to balance on the ring.



**Choose**



**Belong**



**Join In**



**Fit**



# UniPlay Range (Multiple Variations Available)

UniPlay is designed to grab the attention and interest of both younger and older children - and keep it!

With fresh, modern components to delight every child, UniPlay provides healthy exercise and is the perfect way to burn off energy.

Some of the UniPlay products were specially designed for enhanced accessibility. Many of the products have transfer points and/or ramps, designed to make it easy for children in wheelchairs to move around.

The equipment has plenty of floor space and the sand toys, car dashboard and labyrinth game offer hours of fun together. These can be reached from both inside and outside.

The games and picture puzzles on the outside of the equipment have different coloured characters. Children get to practise their strength and coordination in the net tunnel or rest and socialise in the net.



**Find**



**Belong**



**Choose**



**Join In**



**Thrive**



**Fit**

Cameron Park  
Dubbo Regional Council  
Wellington, NSW





*UniPlay "Buridos"*

1



**Transfer Points**

Easy access to the multi-play unit.

4



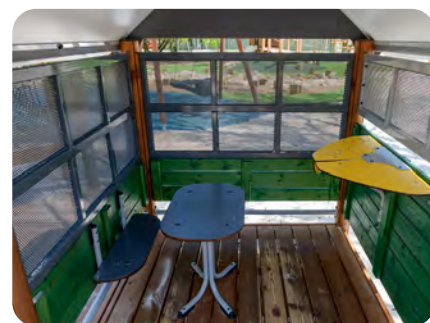
**Interactive Play Panels**

2



**Wheelchair Accessible Ramps**

5



**Cubby Rest Areas**

3



**Easy Transfer Net Play**

6



**Sensory-Sand Play**

# Inclusive Play Units

## UniPlay Eptix



Fallzone Area: 10.5m x 13.2m



No. of Activities: 13+



## #602 Kirsty



Fallzone Area: 10.8m x 15.3m



No. of Activities: 16+





## UniPlay Cullerma



Fallzone Area: 8.1m x 8.5m



No. of Activities: 8+



## QC Jungle Inclusive

EX-15-1029-P15



Fallzone Area: 10.8m x 8.1m



No. of Activities: 11+



# Principles of Inclusive Playgr

*All children have a right to play and everyone should have access to a playground that meets their developmental needs.*

## Stimulate different sensory systems

- Auditory
- Proprioceptive
- Tactile
- Vestibular
- Visual

## Inclusive access for all abilities

- Appropriate surface
- Wide routes
- **Flush transitions** from one surface to another
- **Transfer platform** to and from the equipment

## Areas for calmness

- Children who experience sensory overload need to retreat to a quiet place
- **Orientation paths** provide a safe place where children can enter and exit the play on their own terms

Children who experience sensory overload need to retreat to a quiet place

- Children who experience sensory overload need to retreat to a quiet place
- Children who experience sensory overload need to retreat to a quiet place
- Children who experience sensory overload need to retreat to a quiet place
- Children who experience sensory overload need to retreat to a quiet place
- Children who experience sensory overload need to retreat to a quiet place



# grounds

Access to a well-designed

ancing

s from  
other  
ms/steps  
equipment

## Everyone can play together

- **Group similar items** with varying levels of challenge
- **Full range of equipment** with **various play values and challenge levels**
- **Equipment and features** are **placed at varying heights**
- **The coolest play equipment** is **accessible and usable by all**



## Opportunities for different social interactions

Cooperative play  
Solitary play  
Onlooker play  
Parallel play  
Associate play

## A supportive infrastructure

- **Suitable toilets** and changing facilities
- **A variety of seats** and picnic tables for all abilities
- **Signage is clear**, and if possible, in different formats
- **Information about the play area and its facilities** is easily available for users to plan their visit





# CAMERON PARK

DUBBO REGIONAL COUNCIL

WELLINGTON, NSW



Dubbo Regional Council sought out Austek Play to design and install a new and inclusive nature themed playground within the region's historical Cameron Park, just beside Wellington's CBD.

Through its carefully thought out design and use of natural materials, this playground seamlessly blends in with its surroundings, is sympathetic to its indigenous heritage and provides a new space for families to come together and enjoy one of the best parks in regional New South Wales.

Reference: Benjamin Pilon | 02 6801 4704

Dubbo Regional Council - \$275,000

NSW Gvt. Stronger Communities Fund: - \$280,000

NSW Gvt. Everyone Can Play Fund: - \$193,500





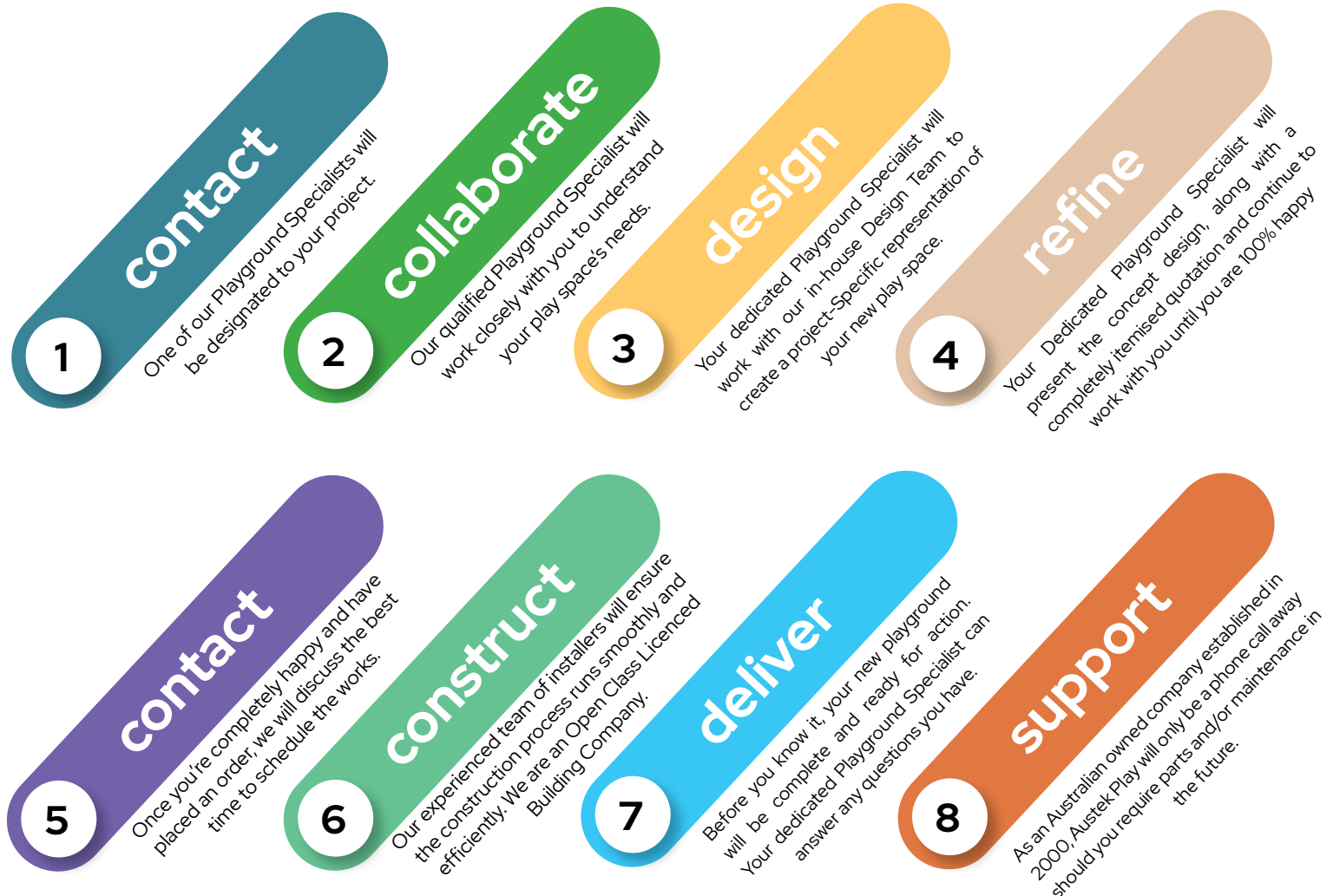
# Licences, insurance and qualifications.

At Austek Play, we are committed to ensuring your playground is supplied, delivered and installed to the highest possible standards. Austek Play is one of very few playground companies that fully comply with BSA requirements and hold an open Class Builders licence.

Our staff are also trained in the requirements of Australian Playground Standards and continue to attend training and seminars to keep up to date with current industry trends. Austek Play carries all of the appropriate insurances, giving you peace of mind when choosing Austek Play for your next project. Certificates of currency are also available on request.

- Public and Products Liability \$20,000,000
- Professional Indemnity \$5,000,000
- Work Cover and Workers Compensation
- QBCC Licence (Builder Open & Low Rise) 1157520

## Our Process





# Our Commitment.

Austek Play is proud to be able to offer Australia's widest range of innovative and exciting equipment available on the market, that is backed up by one of the most comprehensive warranties in the industry.

When you purchase a new playground from Austek Play, you can be certain that you are investing in top quality, purpose-designed and built playground from one of the most committed and qualified playground companies in the market.

Our team of professionals will ensure your investment proves to be a tremendous asset for many years to come.



[austekplay.com.au](http://austekplay.com.au) | [info@austekplay.com.au](mailto:info@austekplay.com.au) | 1300 433 364

ABN 72 091 979 789 | QBCC 1157520

EXCLUSIVE DISTRIBUTOR FOR:

