

# NEXUS GOLIATH

## SPECIFICATIONS



Users  
17



Routes  
13



Surface Area  
46m<sup>2</sup>



Rope  
62m

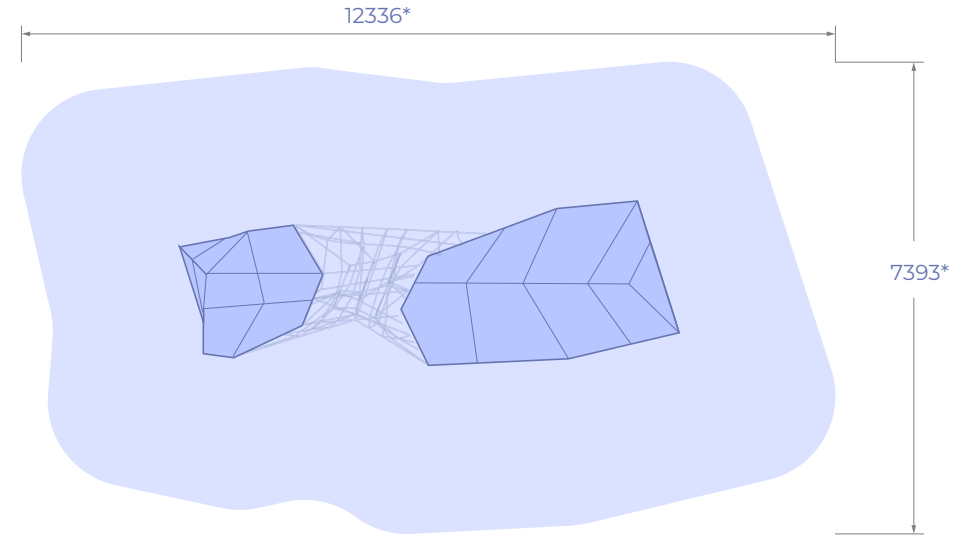
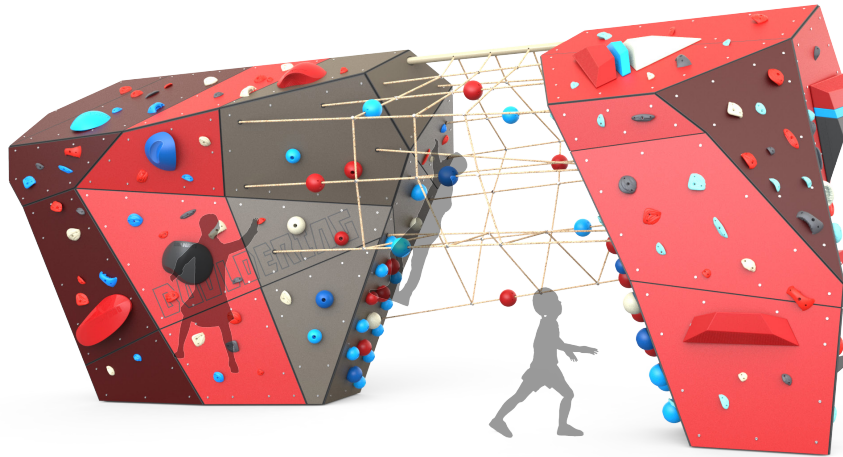


Softfall Perimeter  
33m



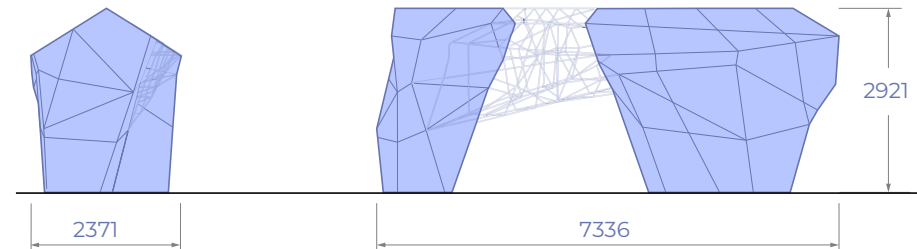
Softfall Area  
78m<sup>2</sup>

\*Fallzone in shaded region. Softfall to AS 4685:1



### Certified to:

- **AS1170.1** Permanent, imposed and other actions.
- **AS1170.2** Wind Actions.
- **AS4685.1** Playground Equipment and Surfacing.
- High Pressure Laminate climbing surface.
- Approximately 10 climbing holds per m<sup>2</sup>.
- Stainless Steel or Galvanised Steel sub frame.
- Hot Dipped Galvanised footing.
- Route-set, designated climbing routes for all abilities.
- Custom, tamper proof fasteners.



Finalist  
Product Design  
2023



industrial  
by nature



IBN PRODUCT SPECIFICATION 00 20250131

# NEXUS GOLIATH

## COLOUR OPTIONS



Users  
17



Routes  
13



Surface Area  
46m<sup>2</sup>



Rope  
62m

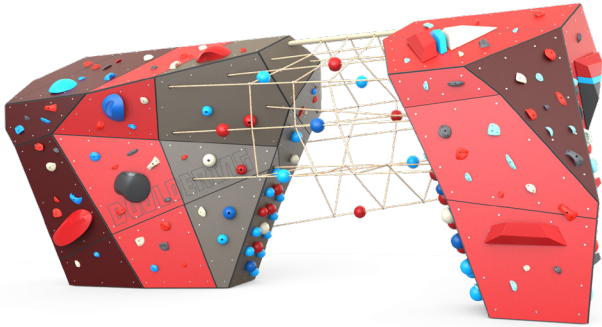


Softfall Perimeter  
33m

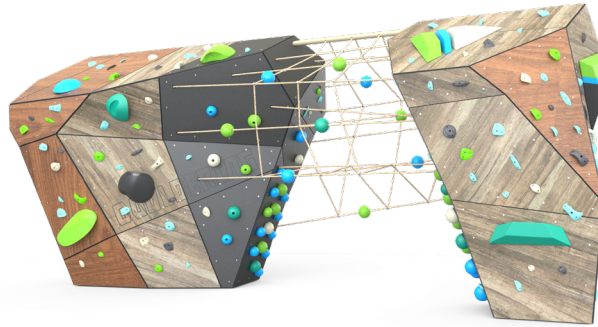


Softfall Area  
78m<sup>2</sup>

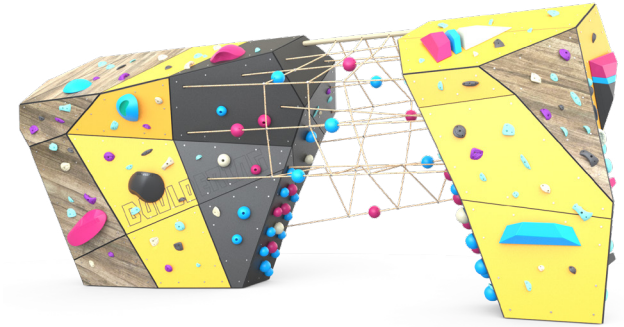
\*Volume sets are available in: Natural, Shell, Geometric and Torus.  
Panel, Hold, and Volume colours may vary.



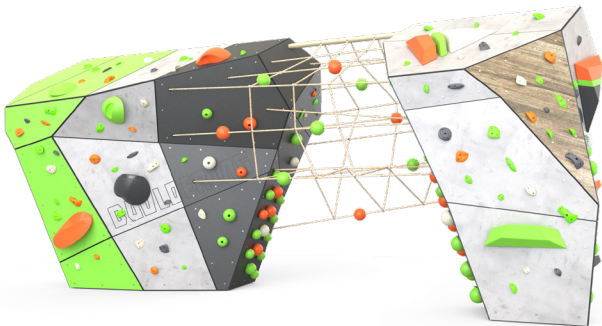
NE-G-X1



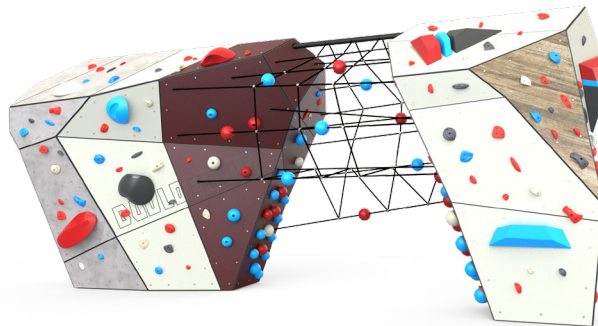
NE-G-X2



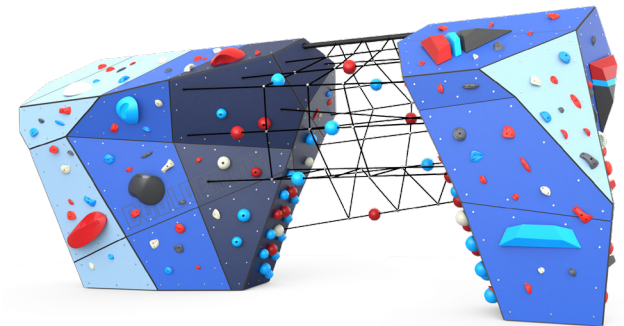
NE-G-X6



NE-G-X8



NE-G-X9



NE-G-X11



Finalist  
Product Design  
2023



industrial  
by nature



IBN PRODUCT SPECIFICATION 00 20250131